

Admissions
Admissions Data

University of California Office of the President

Year 2007

Analysis of Admissions of UC-Eligible
California Public High School Graduates
2006-07

UCOP,

**Analysis of Admissions of UC-Eligible California Public High School Graduates
2006-07**

Prepared by Regent John Moores

**Data supplied by the Student Affairs Admissions Research and Evaluation Unit
UC Office of the President**

2006 UC Admits

The University of California shall guarantee admission as a first-time freshman to every student who ranks among the top one-eighth of all California public high school graduates, with graduates of private and out-of-state secondary schools held to at least equivalent levels.

[p. 25, California Faces...California's Future, Joint Committee for Review of the Master Plan for Higher Education, Sacramento, March 1989]

2006 UC Admit Summary	
CA Public HS Grads	366,350
12.5%	45,794
UC Admits	51,548
Over-Admission	5,754
Actual Percent Admitted	14.1%
Over-Admission Percentage	11.2%

UC Admits 2006

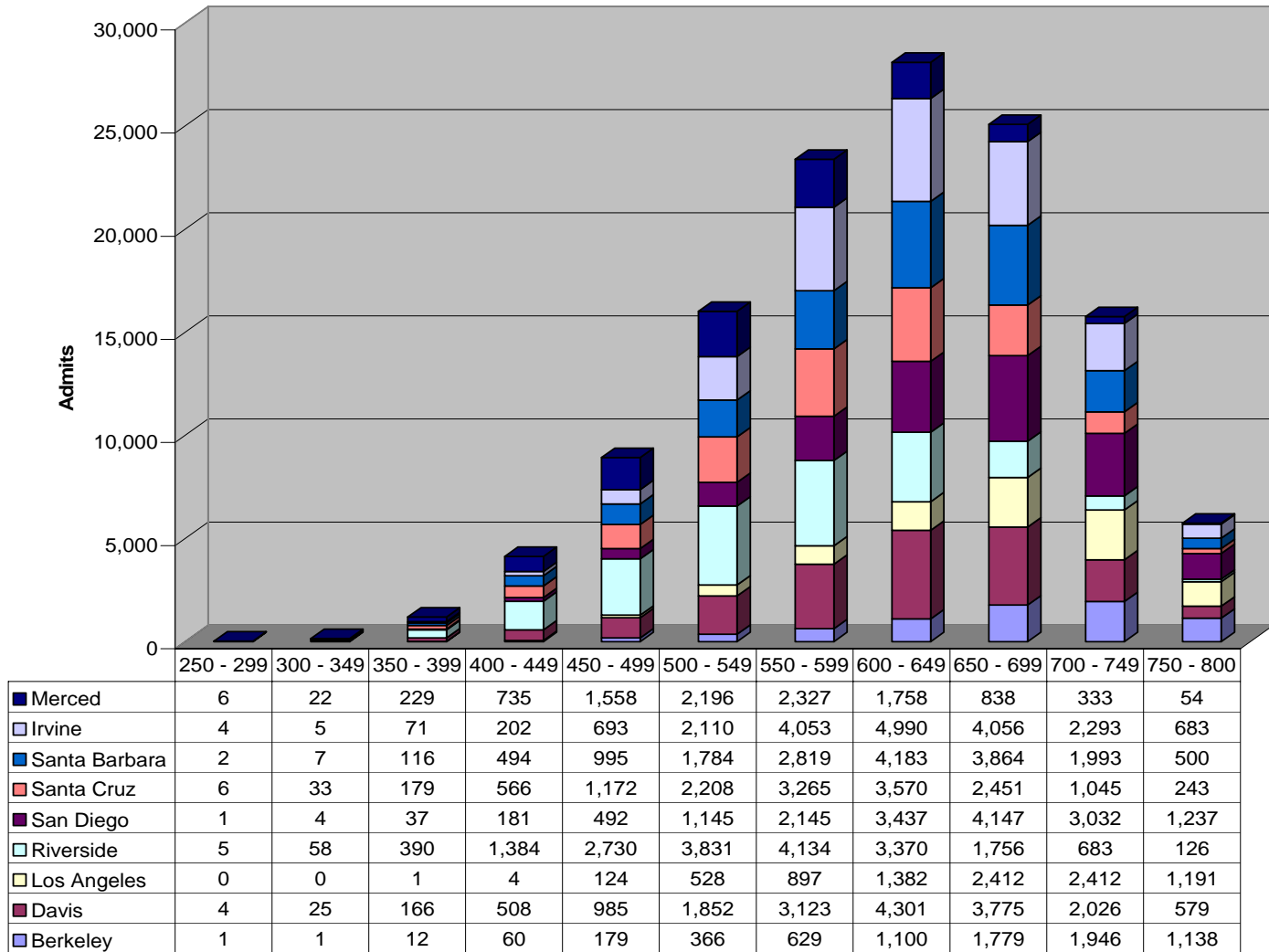
1.	UC Admits 2006 by Campus by SAT	3
2.	UC Admits 2006 by Campus by SAT - Graphical	4
3.	UC Admits 2006 by Campus by GPA	5
4.	UC Systemwide Admits in 2006 by Cumulative SAT & GPA	6
5.	UC Systemwide Admits in 2006 by Cumulative SAT & GPA Percentile	7
6.	2006 Admits by GPA - Graphical.....	8
7.	2006 Systemwide Admits by GPA % - Graphical.....	9
8.	2006 Systemwide Admits by SAT - Graphical	10
9.	2006 Systemwide Admits by SAT % - Graphical	11
10.	UC Berkeley Admits in 2006 by Cumulative SAT & GPA	12
11.	UC Berkeley Admits in 2006 by Cumulative SAT & GPA Percentile	13
12.	UC Davis Admits in 2006 by Cumulative SAT & GPA	14
13.	UC Davis Admits in 2006 by Cumulative SAT & GPA Percentile	15
14.	UC Los Angeles Admits in 2006 by Cumulative SAT & GPA.....	16
15.	UC Los Angeles Admits in 2006 by Cumulative SAT & GPA Percentile.....	17
16.	UC Riverside Admits in 2006 by Cumulative SAT & GPA	18
17.	UC Riverside Admits in 2006 by Cumulative SAT & GPA Percentile	19
18.	UC San Diego Admits in 2006 by Cumulative SAT & GPA.....	20
19.	UC San Diego Admits in 2006 by Cumulative SAT & GPA Percentile.....	21
20.	UC Santa Barbara Admits in 2006 by Cumulative SAT & GPA	22
21.	UC Santa Barbara Admits in 2006 by Cumulative SAT & GPA Percentile	23
22.	UC Santa Cruz Admits in 2006 by Cumulative SAT & GPA	24
23.	UC Santa Cruz Admits in 2006 by Cumulative SAT & GPA Percentile.....	25
24.	UC Irvine Admits in 2006 by Cumulative SAT & GPA	26
25.	UC Irvine Admits in 2006 by Cumulative SAT & GPA Percentile	27
26.	UC Merced Admits in 2006 by Cumulative SAT & GPA	28
27.	UC Merced Admits in 2006 by Cumulative SAT & GPA Percentile	29

Note: Some students were admitted to multiple campuses. Therefore, "Total Admit" will exceed the "Systemwide" number, which indicates unique students.

1. UC Admits 2006 by Campus by SAT

		Average SAT Score (200 - 800)													
		No Score	200 - 249	250 - 299	300 - 349	350 - 399	400 - 449	450 - 499	500 - 549	550 - 599	600 - 649	650 - 699	700 - 749	750 - 800	Total
Systemwide		93	0	11	96	669	2,288	4,741	7,878	10,356	10,855	8,259	4,650	1,652	51,548
% of System Admit		0.2%	0.0%	0.0%	0.2%	1.3%	4.4%	9.2%	15.3%	20.1%	21.1%	16.0%	9.0%	3.2%	100.0%
Campus	Berkeley	29	0	1	1	12	60	179	366	629	1,100	1,779	1,946	1,138	7,240
	Davis	19	0	4	25	166	508	985	1,852	3,123	4,301	3,775	2,026	579	17,363
	Los Angeles	8	0	0	0	1	4	124	528	897	1,382	2,412	2,412	1,191	8,959
	Riverside	15	0	5	58	390	1,384	2,730	3,831	4,134	3,370	1,756	683	126	18,482
	San Diego	6	0	1	4	37	181	492	1,145	2,145	3,437	4,147	3,032	1,237	15,864
	Santa Cruz	55	0	6	33	179	566	1,172	2,208	3,265	3,570	2,451	1,045	243	14,793
	Santa Barbara	40	0	2	7	116	494	995	1,784	2,819	4,183	3,864	1,993	500	16,797
	Irvine	23	0	4	5	71	202	693	2,110	4,053	4,990	4,056	2,293	683	19,183
	Merced	13	0	6	22	229	735	1,558	2,196	2,327	1,758	838	333	54	10,069
	Total Admit		208	0	29	155	1,201	4,134	8,928	16,020	23,392	28,091	25,078	15,763	5,751
% of Total		0.2%	0.0%	0.0%	0.1%	0.9%	3.2%	6.9%	12.4%	18.2%	21.8%	19.5%	12.2%	4.5%	100.0%

2. UC Admits 2006 by Campus by SAT - Graphical



3. UC Admits 2006 by Campus by GPA

	No GPA	<2.50	2.50 - 2.59	2.60 - 2.69	2.70 - 2.79	2.80 - 2.89	2.90 - 2.99	3.00 - 3.09	3.10 - 3.19	3.20 - 3.29	3.30 - 3.39	3.40 - 3.49	
Systemwide	553	21	18	41	97	305	591	1,549	1,694	2,368	2,820	2,998	
% of System Admit	1.1%	0.0%	0.0%	0.1%	0.2%	0.6%	1.1%	3.0%	3.3%	4.6%	5.5%	5.8%	
Campus	Berkeley	53	0	1	0	1	0	2	7	9	12	12	20
	Davis	74	10	7	15	21	49	65	215	263	412	557	698
	Los Angeles	37	0	0	0	2	1	2	2	5	11	17	38
	Riverside	81	7	10	18	54	204	385	1,125	1,157	1,538	1,644	1,639
	San Diego	341	0	0	0	0	4	2	12	19	50	95	179
	Santa Barbara	87	1	1	2	8	19	33	115	149	267	430	591
	Santa Cruz	49	1	0	5	10	15	45	442	561	863	1,057	1,181
	Irvine	64	0	0	1	5	3	9	36	56	349	595	729
	Merced	47	7	4	8	19	129	294	691	683	880	928	918
	Total Admit	833	26	23	49	120	424	837	2,645	2,902	4,382	5,335	5,993
% of Total	0.6%	0.0%	0.0%	0.0%	0.1%	0.3%	0.7%	2.1%	2.3%	3.4%	4.1%	4.7%	

	3.50 - 3.59	3.60 - 3.69	3.70 - 3.79	3.80 - 3.89	3.90 - 3.99	4.00 - 4.09	4.10 - 4.19	4.20 - 4.29	4.30 - 4.39	4.40 - 4.49	4.50 +	Total	
Systemwide	4,408	4,218	4,472	4,602	4,060	5,749	3,994	4,093	2,596	292	9	51,548	
% of System Admit	8.6%	8.2%	8.7%	8.9%	7.9%	11.2%	7.7%	7.9%	5.0%	0.6%	0.0%	100.0%	
Campus	Berkeley	46	68	120	210	311	898	1,342	2,237	1,706	181	4	7,240
	Davis	1,307	1,459	1,675	1,832	1,774	2,524	1,718	1,650	937	98	3	17,363
	Los Angeles	114	188	273	459	606	1,422	1,678	2,285	1,647	169	3	8,959
	Riverside	2,109	1,753	1,704	1,504	1,080	1,164	584	456	248	18	0	18,482
	San Diego	436	636	956	1,412	1,581	2,889	2,398	2,839	1,827	185	3	15,864
	Santa Barbara	1,072	1,293	1,687	1,977	1,819	2,738	1,792	1,600	982	128	6	16,797
	Santa Cruz	1,675	1,483	1,468	1,428	1,197	1,486	802	659	332	32	2	14,793
	Irvine	1,603	1,717	1,928	2,083	1,869	2,769	2,019	2,010	1,194	142	2	19,183
	Merced	1,157	938	891	777	518	547	296	217	108	12	0	10,069
	Total Admit	9,519	9,535	10,702	11,682	10,755	16,437	12,629	13,953	8,981	965	23	128,750
% of Total	7.4%	7.4%	8.3%	9.1%	8.4%	12.8%	9.8%	10.8%	7.0%	0.7%	0.0%	100.0%	

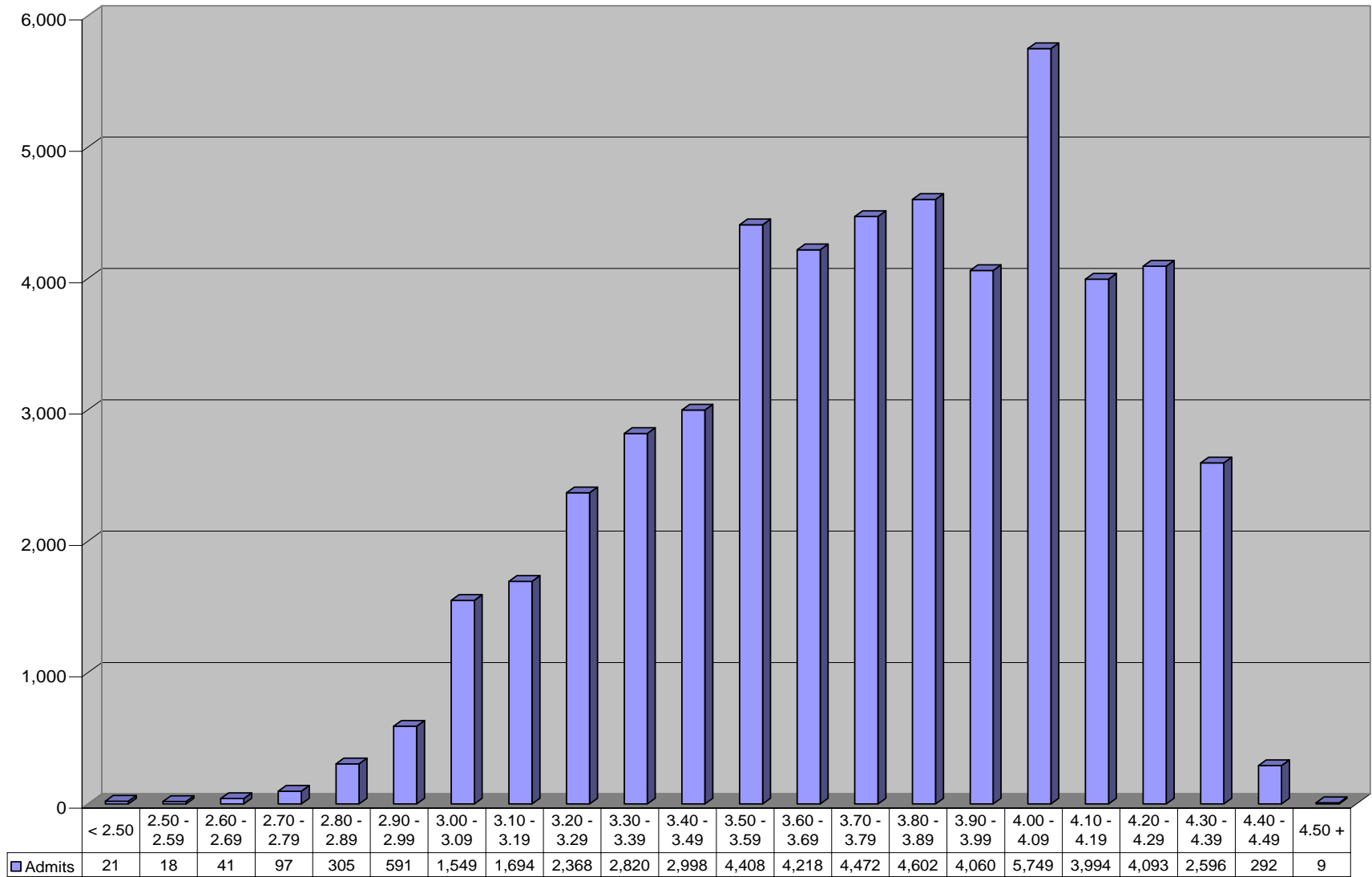
4. UC Systemwide Admits in 2006 by Cumulative SAT & GPA

		Average SAT Score (200 - 800)													
		n/a	<250	<300	<350	<400	<450	<500	<550	<600	<650	<700	<750	<801	Total
Cumulative GPA (5.0 Scale)	<4.50+	67	0	11	106	766	3,037	7,734	15,550	25,782	36,521	44,674	49,288	50,928	50,995
	<4.50	65	0	11	106	766	3,037	7,733	15,549	25,781	36,520	44,670	49,282	50,921	50,986
	<4.40	65	0	10	105	765	3,035	7,727	15,535	25,741	36,426	44,481	49,029	50,629	50,694
	<4.30	62	0	10	105	760	3,020	7,691	15,409	25,414	35,630	43,003	46,864	48,036	48,098
	<4.20	58	0	10	105	757	2,993	7,596	15,093	24,633	34,062	40,349	43,252	43,947	44,005
	<4.10	52	0	10	103	747	2,931	7,396	14,572	23,470	31,940	37,251	39,498	39,959	40,011
	<4.00	36	0	10	99	710	2,773	6,935	13,424	21,186	28,243	32,325	33,921	34,226	34,262
	<3.90	26	0	9	93	673	2,594	6,442	12,385	19,305	25,347	28,689	29,953	30,176	30,202
	<3.80	25	0	9	86	635	2,382	5,779	10,979	16,883	21,846	24,467	25,416	25,575	25,600
	<3.70	19	0	6	74	551	2,081	5,034	9,471	14,312	18,290	20,290	20,994	21,109	21,128
	<3.60	12	0	4	65	468	1,755	4,217	7,852	11,722	14,790	16,309	16,822	16,898	16,910
	<3.50	7	0	3	51	367	1,384	3,289	6,025	8,853	11,053	12,110	12,447	12,495	12,502
	<3.40	4	0	3	37	286	1,060	2,540	4,691	6,831	8,468	9,231	9,463	9,500	9,504
	<3.30	3	0	1	22	196	726	1,797	3,341	4,837	5,952	6,491	6,656	6,681	6,684
	<3.20	1	0	0	12	120	439	1,124	2,114	3,110	3,842	4,180	4,297	4,315	4,316
	<3.10	0	0	0	5	56	220	624	1,224	1,853	2,313	2,532	2,610	2,622	2,622
	<3.00	0	0	0	1	13	77	221	432	701	916	1,017	1,065	1,073	1,073
	<2.90	0	0	0	1	8	36	117	199	314	401	448	477	482	482
	<2.80	0	0	0	1	5	11	46	77	111	141	161	174	177	177
	<2.70	0	0	0	0	4	6	24	39	47	62	71	78	80	80
<2.60	0	0	0	0	2	4	11	19	21	30	32	37	39	39	
<2.50	0	0	0	0	2	3	7	13	13	15	17	20	21	21	
n/a	26	0	0	1	10	27	71	133	257	373	479	515	527	553	
Total	93	0	11	107	776	3,064	7,805	15,683	26,039	36,894	45,153	49,803	51,455	51,548	

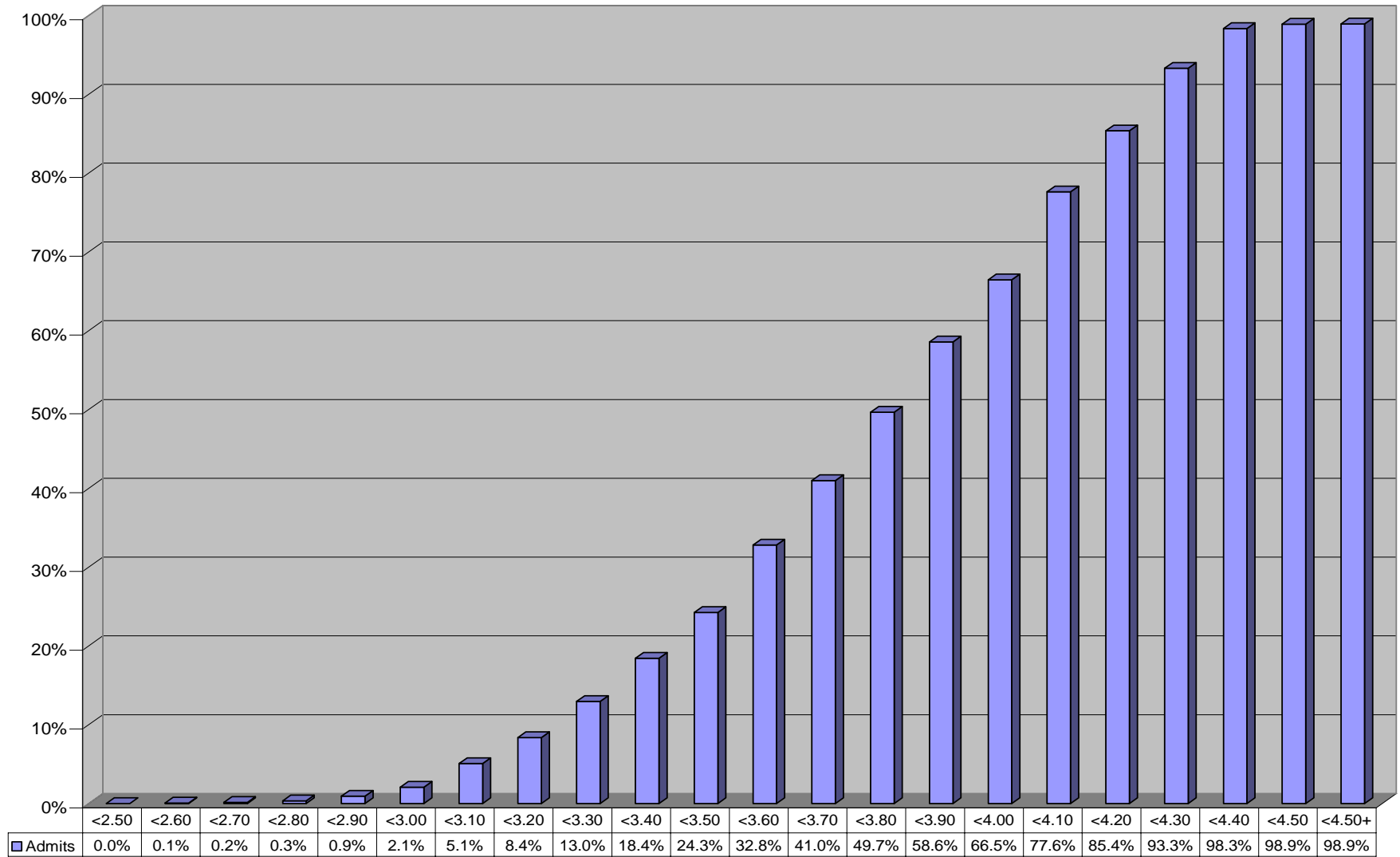
5. UC Systemwide Admits in 2006 by Cumulative SAT & GPA Percentile

		Average SAT Score (200 - 800)													
		n/a	<250	<300	<350	<400	<450	<500	<550	<600	<650	<700	<750	<801	Total
Cumulative GPA (5.0 Scale)	<4.50+	0.1%	0.0%	0.0%	0.2%	1.5%	5.9%	15.0%	30.2%	50.0%	70.8%	86.7%	95.6%	98.8%	98.9%
	<4.50	0.1%	0.0%	0.0%	0.2%	1.5%	5.9%	15.0%	30.2%	50.0%	70.8%	86.7%	95.6%	98.8%	98.9%
	<4.40	0.1%	0.0%	0.0%	0.2%	1.5%	5.9%	15.0%	30.1%	49.9%	70.7%	86.3%	95.1%	98.2%	98.3%
	<4.30	0.1%	0.0%	0.0%	0.2%	1.5%	5.9%	14.9%	29.9%	49.3%	69.1%	83.4%	90.9%	93.2%	93.3%
	<4.20	0.1%	0.0%	0.0%	0.2%	1.5%	5.8%	14.7%	29.3%	47.8%	66.1%	78.3%	83.9%	85.3%	85.4%
	<4.10	0.1%	0.0%	0.0%	0.2%	1.4%	5.7%	14.3%	28.3%	45.5%	62.0%	72.3%	76.6%	77.5%	77.6%
	<4.00	0.1%	0.0%	0.0%	0.2%	1.4%	5.4%	13.5%	26.0%	41.1%	54.8%	62.7%	65.8%	66.4%	66.5%
	<3.90	0.1%	0.0%	0.0%	0.2%	1.3%	5.0%	12.5%	24.0%	37.5%	49.2%	55.7%	58.1%	58.5%	58.6%
	<3.80	0.0%	0.0%	0.0%	0.2%	1.2%	4.6%	11.2%	21.3%	32.8%	42.4%	47.5%	49.3%	49.6%	49.7%
	<3.70	0.0%	0.0%	0.0%	0.1%	1.1%	4.0%	9.8%	18.4%	27.8%	35.5%	39.4%	40.7%	41.0%	41.0%
	<3.60	0.0%	0.0%	0.0%	0.1%	0.9%	3.4%	8.2%	15.2%	22.7%	28.7%	31.6%	32.6%	32.8%	32.8%
	<3.50	0.0%	0.0%	0.0%	0.1%	0.7%	2.7%	6.4%	11.7%	17.2%	21.4%	23.5%	24.1%	24.2%	24.3%
	<3.40	0.0%	0.0%	0.0%	0.1%	0.6%	2.1%	4.9%	9.1%	13.3%	16.4%	17.9%	18.4%	18.4%	18.4%
	<3.30	0.0%	0.0%	0.0%	0.0%	0.4%	1.4%	3.5%	6.5%	9.4%	11.5%	12.6%	12.9%	13.0%	13.0%
	<3.20	0.0%	0.0%	0.0%	0.0%	0.2%	0.9%	2.2%	4.1%	6.0%	7.5%	8.1%	8.3%	8.4%	8.4%
	<3.10	0.0%	0.0%	0.0%	0.0%	0.1%	0.4%	1.2%	2.4%	3.6%	4.5%	4.9%	5.1%	5.1%	5.1%
	<3.00	0.0%	0.0%	0.0%	0.0%	0.0%	0.1%	0.4%	0.8%	1.4%	1.8%	2.0%	2.1%	2.1%	2.1%
	<2.90	0.0%	0.0%	0.0%	0.0%	0.0%	0.1%	0.2%	0.4%	0.6%	0.8%	0.9%	0.9%	0.9%	0.9%
	<2.80	0.0%	0.0%	0.0%	0.0%	0.0%	0.0%	0.1%	0.1%	0.2%	0.3%	0.3%	0.3%	0.3%	0.3%
	<2.70	0.0%	0.0%	0.0%	0.0%	0.0%	0.0%	0.0%	0.1%	0.1%	0.1%	0.1%	0.2%	0.2%	0.2%
<2.60	0.0%	0.0%	0.0%	0.0%	0.0%	0.0%	0.0%	0.0%	0.0%	0.1%	0.1%	0.1%	0.1%	0.1%	
<2.50	0.0%	0.0%	0.0%	0.0%	0.0%	0.0%	0.0%	0.0%	0.0%	0.0%	0.0%	0.0%	0.0%	0.0%	
n/a	0.1%	0.0%	0.0%	0.0%	0.0%	0.1%	0.1%	0.3%	0.5%	0.7%	0.9%	1.0%	1.0%	1.1%	
Total	93	0	11	107	776	3,064	7,805	15,683	26,039	36,894	45,153	49,803	51,455	51,548	

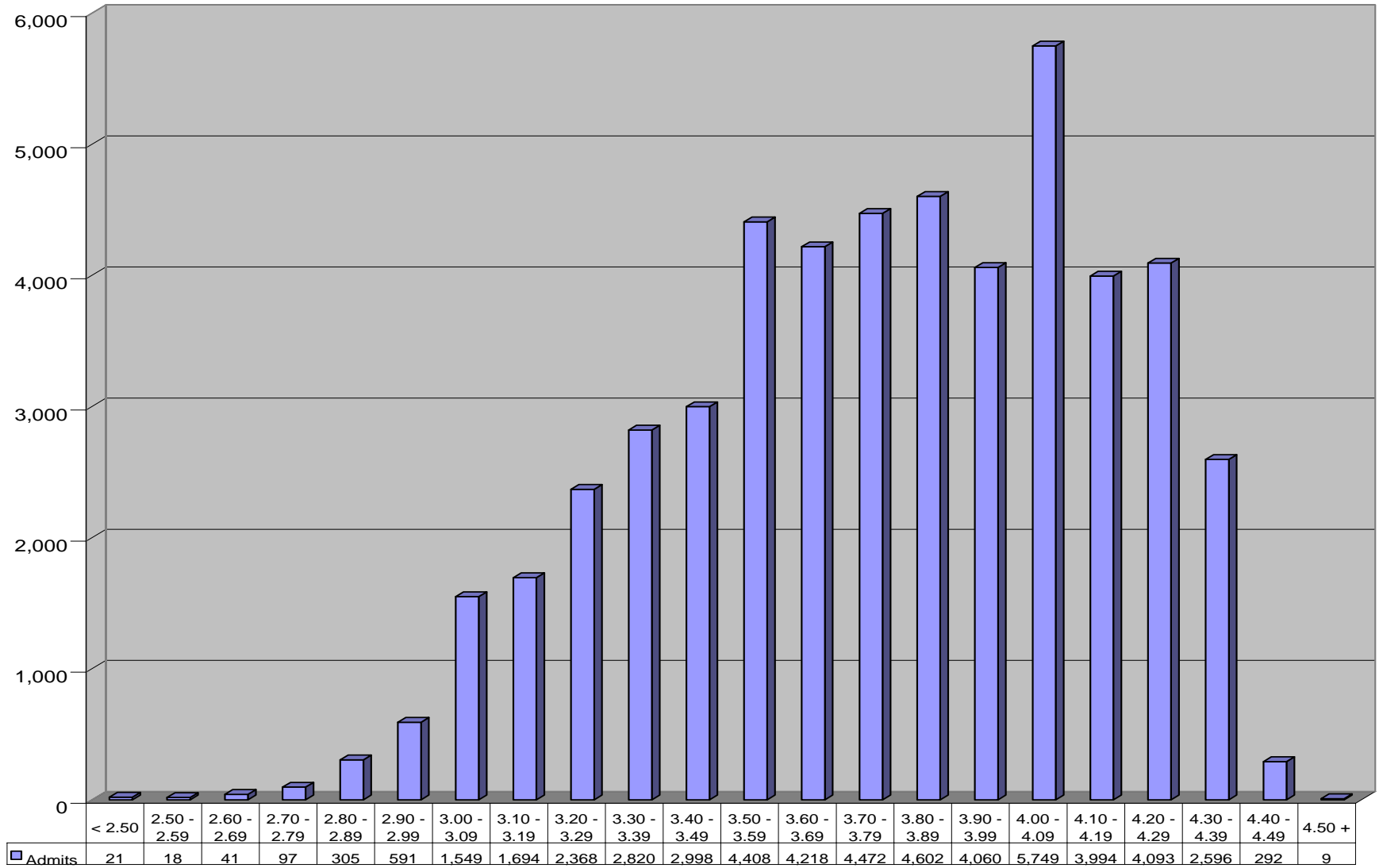
6. 2006 Admits by GPA - Graphical



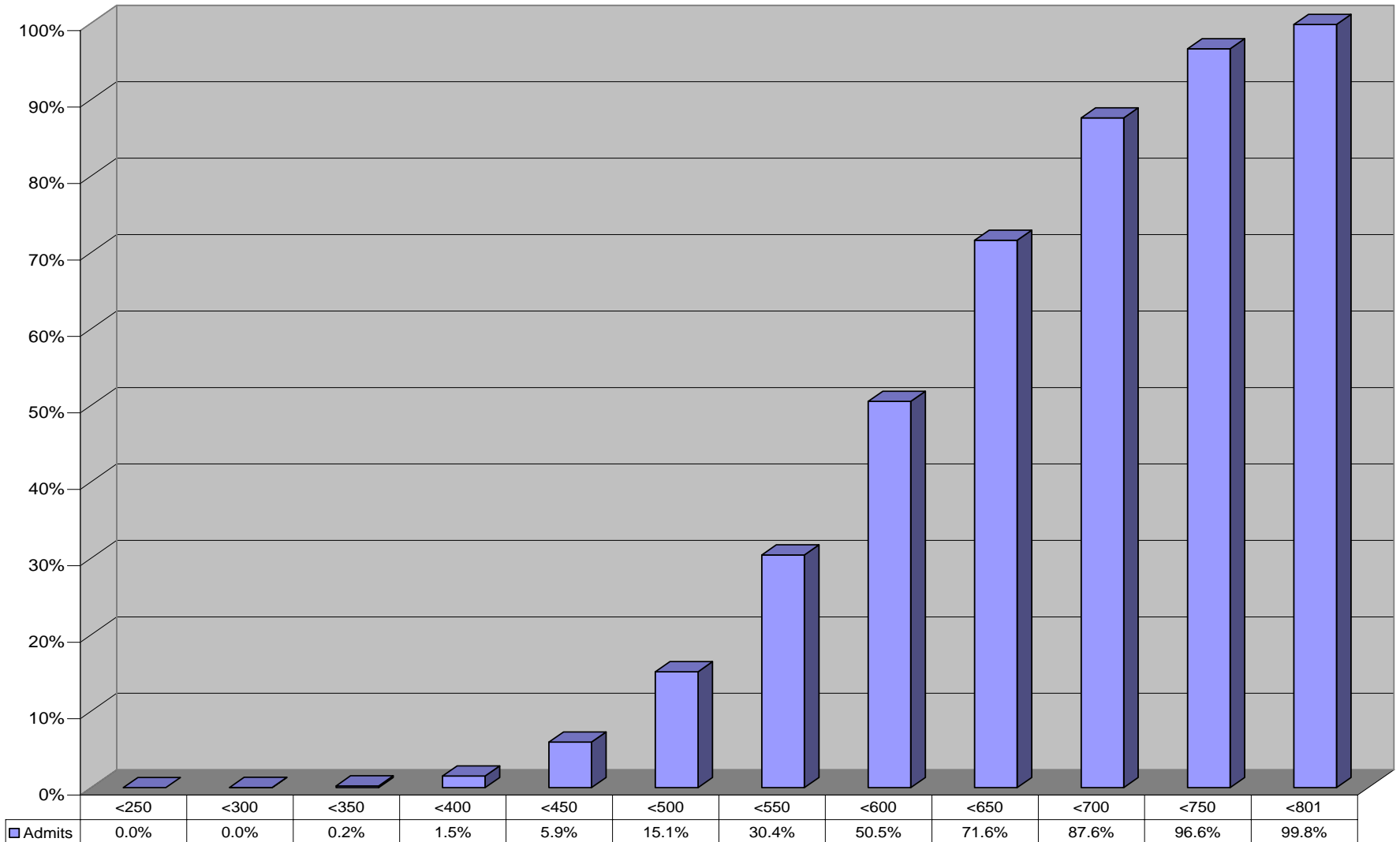
7. 2006 Systemwide Admits by GPA % - Graphical



8. 2006 Systemwide Admits by SAT - Graphical



9. 2006 Systemwide Admits by SAT % - Graphical



10. UC Berkeley Admits in 2006 by Cumulative SAT & GPA

		Average SAT Score (200 - 800)													
		n/a	<250	<300	<350	<400	<450	<500	<550	<600	<650	<700	<750	<801	Total
Cumulative GPA (5.0 Scale)	<4.50+	8	0	1	2	14	74	252	618	1,244	2,338	4,105	6,045	7,179	7,187
	<4.50	8	0	1	2	14	74	251	617	1,243	2,337	4,103	6,041	7,175	7,183
	<4.40	8	0	1	2	14	74	250	610	1,224	2,291	3,996	5,892	6,994	7,002
	<4.30	8	0	1	2	14	71	241	562	1,099	1,938	3,210	4,559	5,288	5,296
	<4.20	6	0	1	2	13	65	213	464	851	1,384	2,061	2,738	3,053	3,059
	<4.10	3	0	1	2	12	53	172	360	620	934	1,262	1,578	1,714	1,717
	<4.00	1	0	1	2	8	36	119	237	376	526	656	768	818	819
	<3.90	0	0	0	1	4	22	85	173	271	360	432	484	508	508
	<3.80	0	0	0	1	4	21	66	123	182	235	271	285	298	298
	<3.70	0	0	0	0	2	13	44	79	116	146	167	171	178	178
	<3.60	0	0	0	0	1	9	31	55	74	93	106	108	110	110
	<3.50	0	0	0	0	0	5	16	31	41	53	62	63	64	64
	<3.40	0	0	0	0	0	3	11	23	30	37	44	44	44	44
	<3.30	0	0	0	0	0	1	7	15	20	26	32	32	32	32
	<3.20	0	0	0	0	0	0	4	10	13	16	20	20	20	20
	<3.10	0	0	0	0	0	0	1	5	6	8	11	11	11	11
	<3.00	0	0	0	0	0	0	0	2	3	4	4	4	4	4
	<2.90	0	0	0	0	0	0	0	0	1	2	2	2	2	2
	<2.80	0	0	0	0	0	0	0	0	1	2	2	2	2	2
	<2.70	0	0	0	0	0	0	0	0	0	1	1	1	1	1
<2.60	0	0	0	0	0	0	0	0	0	1	1	1	1	1	
<2.50	0	0	0	0	0	0	0	0	0	0	0	0	0	0	
n/a	21	0	0	0	0	0	1	1	4	10	22	28	32	53	
Total	29	0	1	2	14	74	253	619	1,248	2,348	4,127	6,073	7,211	7,240	

11. UC Berkeley Admits in 2006 by Cumulative SAT & GPA Percentile

		Average SAT Score (200 - 800)													
		n/a	<250	<300	<350	<400	<450	<500	<550	<600	<650	<700	<750	<801	Total
Cumulative GPA (5.0 Scale)	<4.50+	0.1%	0.0%	0.0%	0.0%	0.2%	1.0%	3.5%	8.5%	17.2%	32.3%	56.7%	83.5%	99.2%	99.3%
	<4.50	0.1%	0.0%	0.0%	0.0%	0.2%	1.0%	3.5%	8.5%	17.2%	32.3%	56.7%	83.4%	99.1%	99.2%
	<4.40	0.1%	0.0%	0.0%	0.0%	0.2%	1.0%	3.5%	8.4%	16.9%	31.6%	55.2%	81.4%	96.6%	96.7%
	<4.30	0.1%	0.0%	0.0%	0.0%	0.2%	1.0%	3.3%	7.8%	15.2%	26.8%	44.3%	63.0%	73.0%	73.1%
	<4.20	0.1%	0.0%	0.0%	0.0%	0.2%	0.9%	2.9%	6.4%	11.8%	19.1%	28.5%	37.8%	42.2%	42.3%
	<4.10	0.0%	0.0%	0.0%	0.0%	0.2%	0.7%	2.4%	5.0%	8.6%	12.9%	17.4%	21.8%	23.7%	23.7%
	<4.00	0.0%	0.0%	0.0%	0.0%	0.1%	0.5%	1.6%	3.3%	5.2%	7.3%	9.1%	10.6%	11.3%	11.3%
	<3.90	0.0%	0.0%	0.0%	0.0%	0.1%	0.3%	1.2%	2.4%	3.7%	5.0%	6.0%	6.7%	7.0%	7.0%
	<3.80	0.0%	0.0%	0.0%	0.0%	0.1%	0.3%	0.9%	1.7%	2.5%	3.2%	3.7%	3.9%	4.1%	4.1%
	<3.70	0.0%	0.0%	0.0%	0.0%	0.0%	0.2%	0.6%	1.1%	1.6%	2.0%	2.3%	2.4%	2.5%	2.5%
	<3.60	0.0%	0.0%	0.0%	0.0%	0.0%	0.1%	0.4%	0.8%	1.0%	1.3%	1.5%	1.5%	1.5%	1.5%
	<3.50	0.0%	0.0%	0.0%	0.0%	0.0%	0.1%	0.2%	0.4%	0.6%	0.7%	0.9%	0.9%	0.9%	0.9%
	<3.40	0.0%	0.0%	0.0%	0.0%	0.0%	0.0%	0.2%	0.3%	0.4%	0.5%	0.6%	0.6%	0.6%	0.6%
	<3.30	0.0%	0.0%	0.0%	0.0%	0.0%	0.0%	0.1%	0.2%	0.3%	0.4%	0.4%	0.4%	0.4%	0.4%
	<3.20	0.0%	0.0%	0.0%	0.0%	0.0%	0.0%	0.1%	0.1%	0.2%	0.2%	0.3%	0.3%	0.3%	0.3%
	<3.10	0.0%	0.0%	0.0%	0.0%	0.0%	0.0%	0.0%	0.1%	0.1%	0.1%	0.2%	0.2%	0.2%	0.2%
	<3.00	0.0%	0.0%	0.0%	0.0%	0.0%	0.0%	0.0%	0.0%	0.0%	0.1%	0.1%	0.1%	0.1%	0.1%
	<2.90	0.0%	0.0%	0.0%	0.0%	0.0%	0.0%	0.0%	0.0%	0.0%	0.0%	0.0%	0.0%	0.0%	0.0%
	<2.80	0.0%	0.0%	0.0%	0.0%	0.0%	0.0%	0.0%	0.0%	0.0%	0.0%	0.0%	0.0%	0.0%	0.0%
	<2.70	0.0%	0.0%	0.0%	0.0%	0.0%	0.0%	0.0%	0.0%	0.0%	0.0%	0.0%	0.0%	0.0%	0.0%
<2.60	0.0%	0.0%	0.0%	0.0%	0.0%	0.0%	0.0%	0.0%	0.0%	0.0%	0.0%	0.0%	0.0%	0.0%	
<2.50	0.0%	0.0%	0.0%	0.0%	0.0%	0.0%	0.0%	0.0%	0.0%	0.0%	0.0%	0.0%	0.0%	0.0%	
n/a	0.3%	0.0%	0.0%	0.0%	0.0%	0.0%	0.0%	0.0%	0.1%	0.1%	0.3%	0.4%	0.4%	0.7%	
Total	0.4%	0.0%	0.0%	0.0%	0.2%	1.0%	3.5%	8.5%	17.2%	32.4%	57.0%	83.9%	99.6%	100.0%	

12. UC Davis Admits in 2006 by Cumulative SAT & GPA

		Average SAT Score (200 - 800)													
		n/a	<250	<300	<350	<400	<450	<500	<550	<600	<650	<700	<750	<801	Total
Cumulative GPA (5.0 Scale)	<4.50+	19	0	4	29	192	698	1,676	3,523	6,628	10,911	14,673	16,692	17,270	17,289
	<4.50	19	0	4	29	192	698	1,675	3,522	6,627	10,910	14,671	16,689	17,267	17,286
	<4.40	19	0	3	28	191	697	1,674	3,519	6,617	10,871	14,600	16,600	17,169	17,188
	<4.30	19	0	3	28	190	690	1,660	3,483	6,525	10,609	14,077	15,803	16,232	16,251
	<4.20	16	0	3	28	189	684	1,633	3,365	6,199	9,967	12,952	14,311	14,585	14,601
	<4.10	12	0	3	28	187	665	1,567	3,186	5,754	9,044	11,583	12,680	12,871	12,883
	<4.00	10	0	3	27	174	607	1,409	2,768	4,858	7,504	9,431	10,210	10,349	10,359
	<3.90	8	0	3	26	167	552	1,248	2,412	4,156	6,304	7,857	8,477	8,577	8,585
	<3.80	8	0	3	24	157	495	1,056	2,010	3,376	5,022	6,206	6,672	6,745	6,753
	<3.70	6	0	3	21	125	417	868	1,636	2,635	3,832	4,682	5,023	5,072	5,078
	<3.60	3	0	2	16	103	339	679	1,246	1,933	2,749	3,339	3,587	3,616	3,619
	<3.50	2	0	1	12	82	252	499	863	1,277	1,768	2,134	2,292	2,310	2,312
	<3.40	2	0	1	8	67	198	391	656	929	1,264	1,501	1,600	1,612	1,614
	<3.30	1	0	1	6	50	145	279	454	628	834	985	1,047	1,056	1,057
	<3.20	1	0	0	4	35	101	185	292	393	512	598	637	644	645
	<3.10	0	0	0	1	22	60	109	178	239	305	352	377	382	382
	<3.00	0	0	0	1	11	28	53	85	109	134	150	163	167	167
	<2.90	0	0	0	1	9	21	41	59	71	83	93	101	102	102
	<2.80	0	0	0	1	5	10	23	33	37	43	49	52	53	53
	<2.70	0	0	0	0	4	6	17	22	23	28	31	32	32	32
<2.60	0	0	0	0	2	4	9	13	13	16	16	17	17	17	
<2.50	0	0	0	0	2	3	5	8	8	9	9	10	10	10	
n/a	0	0	0	0	3	5	12	17	35	53	66	73	74	74	
Total	19	0	4	29	195	703	1,688	3,540	6,663	10,964	14,739	16,765	17,344	17,363	

13. UC Davis Admits in 2006 by Cumulative SAT & GPA Percentile

		Average SAT Score (200 - 800)													
		n/a	<250	<300	<350	<400	<450	<500	<550	<600	<650	<700	<750	<801	Total
Cumulative GPA (5.0 Scale)	<4.50+	0.1%	0.0%	0.0%	0.2%	1.1%	4.0%	9.7%	20.3%	38.2%	62.8%	84.5%	96.1%	99.5%	99.6%
	<4.50	0.1%	0.0%	0.0%	0.2%	1.1%	4.0%	9.6%	20.3%	38.2%	62.8%	84.5%	96.1%	99.4%	99.6%
	<4.40	0.1%	0.0%	0.0%	0.2%	1.1%	4.0%	9.6%	20.3%	38.1%	62.6%	84.1%	95.6%	98.9%	99.0%
	<4.30	0.1%	0.0%	0.0%	0.2%	1.1%	4.0%	9.6%	20.1%	37.6%	61.1%	81.1%	91.0%	93.5%	93.6%
	<4.20	0.1%	0.0%	0.0%	0.2%	1.1%	3.9%	9.4%	19.4%	35.7%	57.4%	74.6%	82.4%	84.0%	84.1%
	<4.10	0.1%	0.0%	0.0%	0.2%	1.1%	3.8%	9.0%	18.3%	33.1%	52.1%	66.7%	73.0%	74.1%	74.2%
	<4.00	0.1%	0.0%	0.0%	0.2%	1.0%	3.5%	8.1%	15.9%	28.0%	43.2%	54.3%	58.8%	59.6%	59.7%
	<3.90	0.0%	0.0%	0.0%	0.1%	1.0%	3.2%	7.2%	13.9%	23.9%	36.3%	45.3%	48.8%	49.4%	49.4%
	<3.80	0.0%	0.0%	0.0%	0.1%	0.9%	2.9%	6.1%	11.6%	19.4%	28.9%	35.7%	38.4%	38.8%	38.9%
	<3.70	0.0%	0.0%	0.0%	0.1%	0.7%	2.4%	5.0%	9.4%	15.2%	22.1%	27.0%	28.9%	29.2%	29.2%
	<3.60	0.0%	0.0%	0.0%	0.1%	0.6%	2.0%	3.9%	7.2%	11.1%	15.8%	19.2%	20.7%	20.8%	20.8%
	<3.50	0.0%	0.0%	0.0%	0.1%	0.5%	1.5%	2.9%	5.0%	7.4%	10.2%	12.3%	13.2%	13.3%	13.3%
	<3.40	0.0%	0.0%	0.0%	0.0%	0.4%	1.1%	2.3%	3.8%	5.4%	7.3%	8.6%	9.2%	9.3%	9.3%
	<3.30	0.0%	0.0%	0.0%	0.0%	0.3%	0.8%	1.6%	2.6%	3.6%	4.8%	5.7%	6.0%	6.1%	6.1%
	<3.20	0.0%	0.0%	0.0%	0.0%	0.2%	0.6%	1.1%	1.7%	2.3%	2.9%	3.4%	3.7%	3.7%	3.7%
	<3.10	0.0%	0.0%	0.0%	0.0%	0.1%	0.3%	0.6%	1.0%	1.4%	1.8%	2.0%	2.2%	2.2%	2.2%
	<3.00	0.0%	0.0%	0.0%	0.0%	0.1%	0.2%	0.3%	0.5%	0.6%	0.8%	0.9%	0.9%	1.0%	1.0%
	<2.90	0.0%	0.0%	0.0%	0.0%	0.1%	0.1%	0.2%	0.3%	0.4%	0.5%	0.5%	0.6%	0.6%	0.6%
	<2.80	0.0%	0.0%	0.0%	0.0%	0.0%	0.1%	0.1%	0.2%	0.2%	0.2%	0.3%	0.3%	0.3%	0.3%
	<2.70	0.0%	0.0%	0.0%	0.0%	0.0%	0.0%	0.1%	0.1%	0.1%	0.2%	0.2%	0.2%	0.2%	0.2%
<2.60	0.0%	0.0%	0.0%	0.0%	0.0%	0.0%	0.1%	0.1%	0.1%	0.1%	0.1%	0.1%	0.1%	0.1%	
<2.50	0.0%	0.0%	0.0%	0.0%	0.0%	0.0%	0.0%	0.0%	0.0%	0.1%	0.1%	0.1%	0.1%	0.1%	
n/a	0.0%	0.0%	0.0%	0.0%	0.0%	0.0%	0.1%	0.1%	0.2%	0.3%	0.4%	0.4%	0.4%	0.4%	
Total	0.1%	0.0%	0.0%	0.2%	1.1%	4.0%	9.7%	20.4%	38.4%	63.1%	84.9%	96.6%	99.9%	100.0%	

14. UC Los Angeles Admits in 2006 by Cumulative SAT & GPA

		Average SAT Score (200 - 800)													
		n/a	<250	<300	<350	<400	<450	<500	<550	<600	<650	<700	<750	<801	Total
Cumulative GPA (5.0 Scale)	<4.50+	8	0	0	0	1	5	128	655	1,547	2,921	5,320	7,728	8,914	8,922
	<4.50	8	0	0	0	1	5	128	655	1,547	2,921	5,318	7,725	8,911	8,919
	<4.40	8	0	0	0	1	5	128	650	1,534	2,887	5,229	7,590	8,742	8,750
	<4.30	7	0	0	0	1	5	124	622	1,438	2,591	4,501	6,303	7,096	7,103
	<4.20	6	0	0	0	1	4	112	553	1,247	2,110	3,360	4,421	4,812	4,818
	<4.10	6	0	0	0	1	3	93	465	1,016	1,622	2,350	2,932	3,134	3,140
	<4.00	2	0	0	0	1	3	75	346	724	1,094	1,410	1,634	1,716	1,718
	<3.90	0	0	0	0	1	3	55	258	533	785	958	1,073	1,112	1,112
	<3.80	0	0	0	0	1	3	38	177	352	510	598	638	653	653
	<3.70	0	0	0	0	1	3	27	112	212	303	352	372	380	380
	<3.60	0	0	0	0	1	1	18	64	114	155	181	191	192	192
	<3.50	0	0	0	0	1	1	11	29	39	62	75	78	78	78
	<3.40	0	0	0	0	0	0	7	16	21	35	38	40	40	40
	<3.30	0	0	0	0	0	0	3	9	13	20	22	23	23	23
	<3.20	0	0	0	0	0	0	1	4	7	10	11	12	12	12
	<3.10	0	0	0	0	0	0	0	2	2	5	6	7	7	7
	<3.00	0	0	0	0	0	0	0	0	2	2	4	4	5	5
	<2.90	0	0	0	0	0	0	0	0	2	2	3	3	3	3
	<2.80	0	0	0	0	0	0	0	0	2	2	2	2	2	2
	<2.70	0	0	0	0	0	0	0	0	0	0	0	0	0	0
<2.60	0	0	0	0	0	0	0	0	0	0	0	0	0	0	
<2.50	0	0	0	0	0	0	0	0	0	0	0	0	0	0	
n/a	0	0	0	0	0	0	1	2	7	15	28	32	37	37	
Total	8	0	0	0	1	5	129	657	1,554	2,936	5,348	7,760	8,951	8,959	

15. UC Los Angeles Admits in 2006 by Cumulative SAT & GPA Percentile

		Average SAT Score (200 - 800)													
		n/a	<250	<300	<350	<400	<450	<500	<550	<600	<650	<700	<750	<801	Total
Cumulative GPA (5.0 Scale)	<4.50+	0.1%	0.0%	0.0%	0.0%	0.0%	0.1%	1.4%	7.3%	17.3%	32.6%	59.4%	86.3%	99.5%	99.6%
	<4.50	0.1%	0.0%	0.0%	0.0%	0.0%	0.1%	1.4%	7.3%	17.3%	32.6%	59.4%	86.2%	99.5%	99.6%
	<4.40	0.1%	0.0%	0.0%	0.0%	0.0%	0.1%	1.4%	7.3%	17.1%	32.2%	58.4%	84.7%	97.6%	97.7%
	<4.30	0.1%	0.0%	0.0%	0.0%	0.0%	0.1%	1.4%	6.9%	16.1%	28.9%	50.2%	70.4%	79.2%	79.3%
	<4.20	0.1%	0.0%	0.0%	0.0%	0.0%	0.0%	1.3%	6.2%	13.9%	23.6%	37.5%	49.3%	53.7%	53.8%
	<4.10	0.1%	0.0%	0.0%	0.0%	0.0%	0.0%	1.0%	5.2%	11.3%	18.1%	26.2%	32.7%	35.0%	35.0%
	<4.00	0.0%	0.0%	0.0%	0.0%	0.0%	0.0%	0.8%	3.9%	8.1%	12.2%	15.7%	18.2%	19.2%	19.2%
	<3.90	0.0%	0.0%	0.0%	0.0%	0.0%	0.0%	0.6%	2.9%	5.9%	8.8%	10.7%	12.0%	12.4%	12.4%
	<3.80	0.0%	0.0%	0.0%	0.0%	0.0%	0.0%	0.4%	2.0%	3.9%	5.7%	6.7%	7.1%	7.3%	7.3%
	<3.70	0.0%	0.0%	0.0%	0.0%	0.0%	0.0%	0.3%	1.3%	2.4%	3.4%	3.9%	4.2%	4.2%	4.2%
	<3.60	0.0%	0.0%	0.0%	0.0%	0.0%	0.0%	0.2%	0.7%	1.3%	1.7%	2.0%	2.1%	2.1%	2.1%
	<3.50	0.0%	0.0%	0.0%	0.0%	0.0%	0.0%	0.1%	0.3%	0.4%	0.7%	0.8%	0.9%	0.9%	0.9%
	<3.40	0.0%	0.0%	0.0%	0.0%	0.0%	0.0%	0.1%	0.2%	0.2%	0.4%	0.4%	0.4%	0.4%	0.4%
	<3.30	0.0%	0.0%	0.0%	0.0%	0.0%	0.0%	0.0%	0.1%	0.1%	0.2%	0.2%	0.3%	0.3%	0.3%
	<3.20	0.0%	0.0%	0.0%	0.0%	0.0%	0.0%	0.0%	0.0%	0.1%	0.1%	0.1%	0.1%	0.1%	0.1%
	<3.10	0.0%	0.0%	0.0%	0.0%	0.0%	0.0%	0.0%	0.0%	0.0%	0.1%	0.1%	0.1%	0.1%	0.1%
	<3.00	0.0%	0.0%	0.0%	0.0%	0.0%	0.0%	0.0%	0.0%	0.0%	0.0%	0.0%	0.0%	0.1%	0.1%
	<2.90	0.0%	0.0%	0.0%	0.0%	0.0%	0.0%	0.0%	0.0%	0.0%	0.0%	0.0%	0.0%	0.0%	0.0%
	<2.80	0.0%	0.0%	0.0%	0.0%	0.0%	0.0%	0.0%	0.0%	0.0%	0.0%	0.0%	0.0%	0.0%	0.0%
	<2.70	0.0%	0.0%	0.0%	0.0%	0.0%	0.0%	0.0%	0.0%	0.0%	0.0%	0.0%	0.0%	0.0%	0.0%
<2.60	0.0%	0.0%	0.0%	0.0%	0.0%	0.0%	0.0%	0.0%	0.0%	0.0%	0.0%	0.0%	0.0%	0.0%	
<2.50	0.0%	0.0%	0.0%	0.0%	0.0%	0.0%	0.0%	0.0%	0.0%	0.0%	0.0%	0.0%	0.0%	0.0%	
n/a	0.0%	0.0%	0.0%	0.0%	0.0%	0.0%	0.0%	0.0%	0.1%	0.2%	0.3%	0.4%	0.4%	0.4%	
Total	0.1%	0.0%	0.0%	0.0%	0.0%	0.1%	1.4%	7.3%	17.3%	32.8%	59.7%	86.6%	99.9%	100.0%	

16. UC Riverside Admits in 2006 by Cumulative SAT & GPA

		Average SAT Score (200 - 800)													
		n/a	<250	<300	<350	<400	<450	<500	<550	<600	<650	<700	<750	<801	Total
Cumulative GPA (5.0 Scale)	<4.50+	13	0	5	63	448	1,825	4,545	8,362	12,472	15,833	17,581	18,264	18,388	18,401
	<4.50	13	0	5	63	448	1,825	4,545	8,362	12,472	15,833	17,581	18,264	18,388	18,401
	<4.40	13	0	5	63	448	1,825	4,544	8,359	12,463	15,822	17,565	18,247	18,370	18,383
	<4.30	12	0	5	63	445	1,818	4,524	8,319	12,383	15,678	17,363	18,012	18,123	18,135
	<4.20	12	0	5	63	444	1,806	4,495	8,245	12,228	15,414	17,003	17,587	17,667	17,679
	<4.10	11	0	5	61	440	1,787	4,436	8,108	11,971	15,025	16,501	17,017	17,084	17,095
	<4.00	10	0	5	60	425	1,729	4,260	7,730	11,322	14,126	15,423	15,864	15,921	15,931
	<3.90	10	0	5	58	408	1,659	4,069	7,335	10,672	13,243	14,401	14,792	14,841	14,851
	<3.80	9	0	5	54	388	1,548	3,752	6,714	9,711	11,988	12,976	13,297	13,338	13,347
	<3.70	7	0	3	45	341	1,368	3,323	5,957	8,548	10,500	11,333	11,601	11,636	11,643
	<3.60	4	0	2	40	296	1,186	2,859	5,108	7,325	8,939	9,635	9,858	9,886	9,890
	<3.50	2	0	2	33	237	970	2,312	4,105	5,848	7,078	7,603	7,759	7,779	7,781
	<3.40	2	0	2	24	186	750	1,819	3,267	4,643	5,607	6,010	6,124	6,140	6,142
	<3.30	2	0	0	12	129	522	1,307	2,390	3,411	4,102	4,397	4,484	4,496	4,498
	<3.20	1	0	0	5	77	303	799	1,512	2,220	2,696	2,883	2,948	2,959	2,960
	<3.10	1	0	0	3	37	154	444	868	1,324	1,634	1,751	1,794	1,802	1,803
	<3.00	0	0	0	0	8	53	145	279	453	586	645	672	678	678
	<2.90	0	0	0	0	2	17	64	115	186	246	273	289	293	293
	<2.80	0	0	0	0	1	2	19	40	58	72	81	87	89	89
	<2.70	0	0	0	0	1	1	8	18	21	27	30	33	35	35
<2.60	0	0	0	0	1	1	3	7	8	11	12	15	17	17	
<2.50	0	0	0	0	1	1	2	4	4	4	5	6	7	7	
n/a	2	0	0	0	5	12	22	36	60	69	77	77	79	81	
Total	15	0	5	63	453	1,837	4,567	8,398	12,532	15,902	17,658	18,341	18,467	18,482	

17. UC Riverside Admits in 2006 by Cumulative SAT & GPA Percentile

		Average SAT Score (200 - 800)													
		n/a	<250	<300	<350	<400	<450	<500	<550	<600	<650	<700	<750	<801	Total
Cumulative GPA (5.0 Scale)	<4.50+	0.1%	0.0%	0.0%	0.3%	2.4%	9.9%	24.6%	45.2%	67.5%	85.7%	95.1%	98.8%	99.5%	99.6%
	<4.50	0.1%	0.0%	0.0%	0.3%	2.4%	9.9%	24.6%	45.2%	67.5%	85.7%	95.1%	98.8%	99.5%	99.6%
	<4.40	0.1%	0.0%	0.0%	0.3%	2.4%	9.9%	24.6%	45.2%	67.4%	85.6%	95.0%	98.7%	99.4%	99.5%
	<4.30	0.1%	0.0%	0.0%	0.3%	2.4%	9.8%	24.5%	45.0%	67.0%	84.8%	93.9%	97.5%	98.1%	98.1%
	<4.20	0.1%	0.0%	0.0%	0.3%	2.4%	9.8%	24.3%	44.6%	66.2%	83.4%	92.0%	95.2%	95.6%	95.7%
	<4.10	0.1%	0.0%	0.0%	0.3%	2.4%	9.7%	24.0%	43.9%	64.8%	81.3%	89.3%	92.1%	92.4%	92.5%
	<4.00	0.1%	0.0%	0.0%	0.3%	2.3%	9.4%	23.0%	41.8%	61.3%	76.4%	83.4%	85.8%	86.1%	86.2%
	<3.90	0.1%	0.0%	0.0%	0.3%	2.2%	9.0%	22.0%	39.7%	57.7%	71.7%	77.9%	80.0%	80.3%	80.4%
	<3.80	0.0%	0.0%	0.0%	0.3%	2.1%	8.4%	20.3%	36.3%	52.5%	64.9%	70.2%	71.9%	72.2%	72.2%
	<3.70	0.0%	0.0%	0.0%	0.2%	1.8%	7.4%	18.0%	32.2%	46.3%	56.8%	61.3%	62.8%	63.0%	63.0%
	<3.60	0.0%	0.0%	0.0%	0.2%	1.6%	6.4%	15.5%	27.6%	39.6%	48.4%	52.1%	53.3%	53.5%	53.5%
	<3.50	0.0%	0.0%	0.0%	0.2%	1.3%	5.2%	12.5%	22.2%	31.6%	38.3%	41.1%	42.0%	42.1%	42.1%
	<3.40	0.0%	0.0%	0.0%	0.1%	1.0%	4.1%	9.8%	17.7%	25.1%	30.3%	32.5%	33.1%	33.2%	33.2%
	<3.30	0.0%	0.0%	0.0%	0.1%	0.7%	2.8%	7.1%	12.9%	18.5%	22.2%	23.8%	24.3%	24.3%	24.3%
	<3.20	0.0%	0.0%	0.0%	0.0%	0.4%	1.6%	4.3%	8.2%	12.0%	14.6%	15.6%	16.0%	16.0%	16.0%
	<3.10	0.0%	0.0%	0.0%	0.0%	0.2%	0.8%	2.4%	4.7%	7.2%	8.8%	9.5%	9.7%	9.8%	9.8%
	<3.00	0.0%	0.0%	0.0%	0.0%	0.0%	0.3%	0.8%	1.5%	2.5%	3.2%	3.5%	3.6%	3.7%	3.7%
	<2.90	0.0%	0.0%	0.0%	0.0%	0.0%	0.1%	0.3%	0.6%	1.0%	1.3%	1.5%	1.6%	1.6%	1.6%
	<2.80	0.0%	0.0%	0.0%	0.0%	0.0%	0.0%	0.1%	0.2%	0.3%	0.4%	0.4%	0.5%	0.5%	0.5%
	<2.70	0.0%	0.0%	0.0%	0.0%	0.0%	0.0%	0.0%	0.1%	0.1%	0.1%	0.2%	0.2%	0.2%	0.2%
<2.60	0.0%	0.0%	0.0%	0.0%	0.0%	0.0%	0.0%	0.0%	0.0%	0.1%	0.1%	0.1%	0.1%	0.1%	
<2.50	0.0%	0.0%	0.0%	0.0%	0.0%	0.0%	0.0%	0.0%	0.0%	0.0%	0.0%	0.0%	0.0%	0.0%	
n/a	0.0%	0.0%	0.0%	0.0%	0.0%	0.1%	0.1%	0.2%	0.3%	0.4%	0.4%	0.4%	0.4%	0.4%	
Total	0.1%	0.0%	0.0%	0.3%	2.5%	9.9%	24.7%	45.4%	67.8%	86.0%	95.5%	99.2%	99.9%	100.0%	

18. UC San Diego Admits in 2006 by Cumulative SAT & GPA

		Average SAT Score (200 - 800)													
		n/a	<250	<300	<350	<400	<450	<500	<550	<600	<650	<700	<750	<801	Total
Cumulative GPA (5.0 Scale)	<4.50+	4	0	1	4	41	216	688	1,800	3,869	7,225	11,286	14,291	15,519	15,523
	<4.50	4	0	1	4	41	216	688	1,800	3,869	7,225	11,284	14,288	15,516	15,520
	<4.40	4	0	1	4	41	215	686	1,792	3,847	7,168	11,168	14,131	15,331	15,335
	<4.30	4	0	1	4	39	212	673	1,737	3,674	6,682	10,193	12,618	13,504	13,508
	<4.20	2	0	1	4	36	202	632	1,582	3,235	5,741	8,456	10,163	10,667	10,669
	<4.10	2	0	1	3	34	184	563	1,376	2,727	4,674	6,742	7,955	8,269	8,271
	<4.00	1	0	1	3	27	151	450	1,036	1,939	3,181	4,459	5,192	5,381	5,382
	<3.90	1	0	1	3	22	116	343	796	1,467	2,322	3,187	3,677	3,800	3,801
	<3.80	1	0	1	3	19	83	236	546	991	1,516	2,026	2,311	2,388	2,389
	<3.70	1	0	1	2	13	54	156	344	616	933	1,208	1,386	1,432	1,433
	<3.60	0	0	0	1	6	31	88	201	370	538	687	778	797	797
	<3.50	0	0	0	0	2	17	42	101	178	256	323	353	361	361
	<3.40	0	0	0	0	2	8	19	54	96	135	165	177	182	182
	<3.30	0	0	0	0	1	5	10	27	45	63	78	85	87	87
	<3.20	0	0	0	0	0	3	6	14	22	28	33	36	37	37
	<3.10	0	0	0	0	0	2	2	5	10	14	16	17	18	18
	<3.00	0	0	0	0	0	0	0	2	2	3	5	6	6	6
	<2.90	0	0	0	0	0	0	0	1	1	1	3	4	4	4
	<2.80	0	0	0	0	0	0	0	0	0	0	0	0	0	0
	<2.70	0	0	0	0	0	0	0	0	0	0	0	0	0	0
<2.60	0	0	0	0	0	0	0	0	0	0	0	0	0	0	
<2.50	0	0	0	0	0	0	0	0	0	0	0	0	0	0	
n/a	2	0	0	1	1	7	27	60	136	217	303	330	339	341	
Total	6	0	1	5	42	223	715	1,860	4,005	7,442	11,589	14,621	15,858	15,864	

19. UC San Diego Admits in 2006 by Cumulative SAT & GPA Percentile

		Average SAT Score (200 - 800)													
		n/a	<250	<300	<350	<400	<450	<500	<550	<600	<650	<700	<750	<801	Total
Cumulative GPA (5.0 Scale)	<4.50+	0.0%	0.0%	0.0%	0.0%	0.3%	1.4%	4.3%	11.3%	24.4%	45.5%	71.1%	90.1%	97.8%	97.9%
	<4.50	0.0%	0.0%	0.0%	0.0%	0.3%	1.4%	4.3%	11.3%	24.4%	45.5%	71.1%	90.1%	97.8%	97.8%
	<4.40	0.0%	0.0%	0.0%	0.0%	0.3%	1.4%	4.3%	11.3%	24.2%	45.2%	70.4%	89.1%	96.6%	96.7%
	<4.30	0.0%	0.0%	0.0%	0.0%	0.2%	1.3%	4.2%	10.9%	23.2%	42.1%	64.3%	79.5%	85.1%	85.1%
	<4.20	0.0%	0.0%	0.0%	0.0%	0.2%	1.3%	4.0%	10.0%	20.4%	36.2%	53.3%	64.1%	67.2%	67.3%
	<4.10	0.0%	0.0%	0.0%	0.0%	0.2%	1.2%	3.5%	8.7%	17.2%	29.5%	42.5%	50.1%	52.1%	52.1%
	<4.00	0.0%	0.0%	0.0%	0.0%	0.2%	1.0%	2.8%	6.5%	12.2%	20.1%	28.1%	32.7%	33.9%	33.9%
	<3.90	0.0%	0.0%	0.0%	0.0%	0.1%	0.7%	2.2%	5.0%	9.2%	14.6%	20.1%	23.2%	24.0%	24.0%
	<3.80	0.0%	0.0%	0.0%	0.0%	0.1%	0.5%	1.5%	3.4%	6.2%	9.6%	12.8%	14.6%	15.1%	15.1%
	<3.70	0.0%	0.0%	0.0%	0.0%	0.1%	0.3%	1.0%	2.2%	3.9%	5.9%	7.6%	8.7%	9.0%	9.0%
	<3.60	0.0%	0.0%	0.0%	0.0%	0.0%	0.2%	0.6%	1.3%	2.3%	3.4%	4.3%	4.9%	5.0%	5.0%
	<3.50	0.0%	0.0%	0.0%	0.0%	0.0%	0.1%	0.3%	0.6%	1.1%	1.6%	2.0%	2.2%	2.3%	2.3%
	<3.40	0.0%	0.0%	0.0%	0.0%	0.0%	0.1%	0.1%	0.3%	0.6%	0.9%	1.0%	1.1%	1.1%	1.1%
	<3.30	0.0%	0.0%	0.0%	0.0%	0.0%	0.0%	0.1%	0.2%	0.3%	0.4%	0.5%	0.5%	0.5%	0.5%
	<3.20	0.0%	0.0%	0.0%	0.0%	0.0%	0.0%	0.0%	0.1%	0.1%	0.2%	0.2%	0.2%	0.2%	0.2%
	<3.10	0.0%	0.0%	0.0%	0.0%	0.0%	0.0%	0.0%	0.0%	0.1%	0.1%	0.1%	0.1%	0.1%	0.1%
	<3.00	0.0%	0.0%	0.0%	0.0%	0.0%	0.0%	0.0%	0.0%	0.0%	0.0%	0.0%	0.0%	0.0%	0.0%
	<2.90	0.0%	0.0%	0.0%	0.0%	0.0%	0.0%	0.0%	0.0%	0.0%	0.0%	0.0%	0.0%	0.0%	0.0%
	<2.80	0.0%	0.0%	0.0%	0.0%	0.0%	0.0%	0.0%	0.0%	0.0%	0.0%	0.0%	0.0%	0.0%	0.0%
	<2.70	0.0%	0.0%	0.0%	0.0%	0.0%	0.0%	0.0%	0.0%	0.0%	0.0%	0.0%	0.0%	0.0%	0.0%
<2.60	0.0%	0.0%	0.0%	0.0%	0.0%	0.0%	0.0%	0.0%	0.0%	0.0%	0.0%	0.0%	0.0%	0.0%	
<2.50	0.0%	0.0%	0.0%	0.0%	0.0%	0.0%	0.0%	0.0%	0.0%	0.0%	0.0%	0.0%	0.0%	0.0%	
n/a	0.0%	0.0%	0.0%	0.0%	0.0%	0.0%	0.2%	0.4%	0.9%	1.4%	1.9%	2.1%	2.1%	2.1%	
Total	0.0%	0.0%	0.0%	0.0%	0.3%	1.4%	4.5%	11.7%	25.2%	46.9%	73.1%	92.2%	100.0%	100.0%	

20. UC Santa Barbara Admits in 2006 by Cumulative SAT & GPA

		Average SAT Score (200 - 800)													
		n/a	<250	<300	<350	<400	<450	<500	<550	<600	<650	<700	<750	<801	Total
Cumulative GPA (5.0 Scale)	<4.50+	38	0	2	9	124	611	1,599	3,374	6,177	10,339	14,188	16,174	16,672	16,710
	<4.50	36	0	2	9	124	611	1,599	3,374	6,177	10,339	14,186	16,171	16,668	16,704
	<4.40	36	0	2	9	124	611	1,596	3,367	6,157	10,291	14,098	16,053	16,540	16,576
	<4.30	36	0	2	9	121	604	1,581	3,315	6,015	9,932	13,455	15,186	15,558	15,594
	<4.20	34	0	2	9	120	593	1,547	3,199	5,686	9,258	12,311	13,688	13,960	13,994
	<4.10	33	0	2	9	118	569	1,465	2,982	5,174	8,256	10,858	11,968	12,169	12,202
	<4.00	23	0	2	9	110	517	1,315	2,559	4,230	6,564	8,501	9,289	9,441	9,464
	<3.90	17	0	2	8	99	465	1,161	2,224	3,568	5,376	6,884	7,513	7,628	7,645
	<3.80	13	0	2	8	90	404	962	1,800	2,793	4,045	5,109	5,569	5,655	5,668
	<3.70	12	0	1	5	72	330	769	1,390	2,091	2,904	3,582	3,905	3,969	3,981
	<3.60	10	0	1	4	50	255	583	1,042	1,514	1,994	2,430	2,636	2,678	2,688
	<3.50	5	0	0	3	32	177	410	711	989	1,269	1,486	1,586	1,611	1,616
	<3.40	4	0	0	2	21	123	279	488	686	845	951	1,004	1,021	1,025
	<3.30	3	0	0	1	16	76	169	294	413	491	553	583	592	595
	<3.20	1	0	0	1	7	40	94	167	241	273	303	322	327	328
	<3.10	0	0	0	0	1	18	48	90	133	148	166	176	179	179
	<3.00	0	0	0	0	0	8	17	30	46	54	61	64	64	64
	<2.90	0	0	0	0	0	4	10	14	22	25	30	31	31	31
	<2.80	0	0	0	0	0	0	3	3	7	9	11	12	12	12
	<2.70	0	0	0	0	0	0	1	1	3	3	4	4	4	4
<2.60	0	0	0	0	0	0	1	1	2	2	2	2	2	2	
<2.50	0	0	0	0	0	0	1	1	1	1	1	1	1	1	
n/a	2	0	0	0	1	8	15	24	40	61	76	83	85	87	
Total	40	0	2	9	125	619	1,614	3,398	6,217	10,400	14,264	16,257	16,757	16,797	

21. UC Santa Barbara Admits in 2006 by Cumulative SAT & GPA Percentile

		Average SAT Score (200 - 800)													
		n/a	<250	<300	<350	<400	<450	<500	<550	<600	<650	<700	<750	<801	Total
Cumulative GPA (5.0 Scale)	<4.50+	0.2%	0.0%	0.0%	0.1%	0.7%	3.6%	9.5%	20.1%	36.8%	61.6%	84.5%	96.3%	99.3%	99.5%
	<4.50	0.2%	0.0%	0.0%	0.1%	0.7%	3.6%	9.5%	20.1%	36.8%	61.6%	84.5%	96.3%	99.2%	99.4%
	<4.40	0.2%	0.0%	0.0%	0.1%	0.7%	3.6%	9.5%	20.0%	36.7%	61.3%	83.9%	95.6%	98.5%	98.7%
	<4.30	0.2%	0.0%	0.0%	0.1%	0.7%	3.6%	9.4%	19.7%	35.8%	59.1%	80.1%	90.4%	92.6%	92.8%
	<4.20	0.2%	0.0%	0.0%	0.1%	0.7%	3.5%	9.2%	19.0%	33.9%	55.1%	73.3%	81.5%	83.1%	83.3%
	<4.10	0.2%	0.0%	0.0%	0.1%	0.7%	3.4%	8.7%	17.8%	30.8%	49.2%	64.6%	71.3%	72.4%	72.6%
	<4.00	0.1%	0.0%	0.0%	0.1%	0.7%	3.1%	7.8%	15.2%	25.2%	39.1%	50.6%	55.3%	56.2%	56.3%
	<3.90	0.1%	0.0%	0.0%	0.0%	0.6%	2.8%	6.9%	13.2%	21.2%	32.0%	41.0%	44.7%	45.4%	45.5%
	<3.80	0.1%	0.0%	0.0%	0.0%	0.5%	2.4%	5.7%	10.7%	16.6%	24.1%	30.4%	33.2%	33.7%	33.7%
	<3.70	0.1%	0.0%	0.0%	0.0%	0.4%	2.0%	4.6%	8.3%	12.4%	17.3%	21.3%	23.2%	23.6%	23.7%
	<3.60	0.1%	0.0%	0.0%	0.0%	0.3%	1.5%	3.5%	6.2%	9.0%	11.9%	14.5%	15.7%	15.9%	16.0%
	<3.50	0.0%	0.0%	0.0%	0.0%	0.2%	1.1%	2.4%	4.2%	5.9%	7.6%	8.8%	9.4%	9.6%	9.6%
	<3.40	0.0%	0.0%	0.0%	0.0%	0.1%	0.7%	1.7%	2.9%	4.1%	5.0%	5.7%	6.0%	6.1%	6.1%
	<3.30	0.0%	0.0%	0.0%	0.0%	0.1%	0.5%	1.0%	1.8%	2.5%	2.9%	3.3%	3.5%	3.5%	3.5%
	<3.20	0.0%	0.0%	0.0%	0.0%	0.0%	0.2%	0.6%	1.0%	1.4%	1.6%	1.8%	1.9%	1.9%	2.0%
	<3.10	0.0%	0.0%	0.0%	0.0%	0.0%	0.1%	0.3%	0.5%	0.8%	0.9%	1.0%	1.0%	1.1%	1.1%
	<3.00	0.0%	0.0%	0.0%	0.0%	0.0%	0.0%	0.1%	0.2%	0.3%	0.3%	0.4%	0.4%	0.4%	0.4%
	<2.90	0.0%	0.0%	0.0%	0.0%	0.0%	0.0%	0.1%	0.1%	0.1%	0.1%	0.2%	0.2%	0.2%	0.2%
	<2.80	0.0%	0.0%	0.0%	0.0%	0.0%	0.0%	0.0%	0.0%	0.0%	0.1%	0.1%	0.1%	0.1%	0.1%
	<2.70	0.0%	0.0%	0.0%	0.0%	0.0%	0.0%	0.0%	0.0%	0.0%	0.0%	0.0%	0.0%	0.0%	0.0%
<2.60	0.0%	0.0%	0.0%	0.0%	0.0%	0.0%	0.0%	0.0%	0.0%	0.0%	0.0%	0.0%	0.0%	0.0%	
<2.50	0.0%	0.0%	0.0%	0.0%	0.0%	0.0%	0.0%	0.0%	0.0%	0.0%	0.0%	0.0%	0.0%	0.0%	
n/a	0.0%	0.0%	0.0%	0.0%	0.0%	0.0%	0.1%	0.1%	0.2%	0.4%	0.5%	0.5%	0.5%	0.5%	
Total	0.2%	0.0%	0.0%	0.1%	0.7%	3.7%	9.6%	20.2%	37.0%	61.9%	84.9%	96.8%	99.8%	100.0%	

22. UC Santa Cruz Admits in 2006 by Cumulative SAT & GPA

		Average SAT Score (200 - 800)													
		n/a	<250	<300	<350	<400	<450	<500	<550	<600	<650	<700	<750	<801	Total
Cumulative GPA (5.0 Scale)	<4.50+	54	0	6	39	216	782	1,950	4,156	7,410	10,966	13,406	14,447	14,690	14,744
	<4.50	54	0	6	39	216	782	1,950	4,156	7,410	10,966	13,405	14,445	14,688	14,742
	<4.40	54	0	5	38	215	781	1,948	4,154	7,404	10,951	13,384	14,416	14,656	14,710
	<4.30	54	0	5	38	215	778	1,943	4,137	7,364	10,835	13,173	14,125	14,324	14,378
	<4.20	50	0	5	38	215	772	1,924	4,074	7,209	10,545	12,699	13,521	13,669	13,719
	<4.10	45	0	5	38	214	759	1,887	3,985	6,985	10,103	12,049	12,751	12,872	12,917
	<4.00	33	0	5	35	199	710	1,756	3,687	6,406	9,127	10,755	11,305	11,398	11,431
	<3.90	30	0	4	33	194	658	1,635	3,413	5,863	8,270	9,661	10,131	10,204	10,234
	<3.80	26	0	4	32	182	601	1,467	3,033	5,155	7,185	8,335	8,724	8,780	8,806
	<3.70	21	0	1	27	151	511	1,251	2,615	4,383	6,062	6,980	7,271	7,317	7,338
	<3.60	17	0	1	22	126	426	1,038	2,156	3,541	4,859	5,579	5,802	5,838	5,855
	<3.50	12	0	0	15	93	325	769	1,551	2,552	3,502	4,001	4,148	4,168	4,180
	<3.40	11	0	0	9	68	232	551	1,139	1,842	2,529	2,878	2,970	2,988	2,999
	<3.30	3	0	0	5	43	147	349	732	1,181	1,624	1,866	1,927	1,939	1,942
	<3.20	0	0	0	4	21	76	200	404	653	899	1,034	1,071	1,079	1,079
	<3.10	0	0	0	0	5	31	86	185	311	421	491	514	518	518
	<3.00	0	0	0	0	0	3	9	17	35	55	70	74	76	76
	<2.90	0	0	0	0	0	1	4	7	13	22	28	30	31	31
	<2.80	0	0	0	0	0	1	1	2	6	12	15	16	16	16
	<2.70	0	0	0	0	0	0	0	1	2	4	6	6	6	6
<2.60	0	0	0	0	0	0	0	0	0	1	1	1	1	1	
<2.50	0	0	0	0	0	0	0	0	0	1	1	1	1	1	
n/a	1	0	0	0	2	2	6	8	19	33	44	48	48	49	
Total	55	0	6	39	218	784	1,956	4,164	7,429	10,999	13,450	14,495	14,738	14,793	

23. UC Santa Cruz Admits in 2006 by Cumulative SAT & GPA Percentile

		Average SAT Score (200 - 800)													
		n/a	<250	<300	<350	<400	<450	<500	<550	<600	<650	<700	<750	<801	Total
Cumulative GPA (5.0 Scale)	<4.50+	0.4%	0.0%	0.0%	0.3%	1.5%	5.3%	13.2%	28.1%	50.1%	74.1%	90.6%	97.7%	99.3%	99.7%
	<4.50	0.4%	0.0%	0.0%	0.3%	1.5%	5.3%	13.2%	28.1%	50.1%	74.1%	90.6%	97.6%	99.3%	99.7%
	<4.40	0.4%	0.0%	0.0%	0.3%	1.5%	5.3%	13.2%	28.1%	50.1%	74.0%	90.5%	97.5%	99.1%	99.4%
	<4.30	0.4%	0.0%	0.0%	0.3%	1.5%	5.3%	13.1%	28.0%	49.8%	73.2%	89.0%	95.5%	96.8%	97.2%
	<4.20	0.3%	0.0%	0.0%	0.3%	1.5%	5.2%	13.0%	27.5%	48.7%	71.3%	85.8%	91.4%	92.4%	92.7%
	<4.10	0.3%	0.0%	0.0%	0.3%	1.4%	5.1%	12.8%	26.9%	47.2%	68.3%	81.5%	86.2%	87.0%	87.3%
	<4.00	0.2%	0.0%	0.0%	0.2%	1.3%	4.8%	11.9%	24.9%	43.3%	61.7%	72.7%	76.4%	77.0%	77.3%
	<3.90	0.2%	0.0%	0.0%	0.2%	1.3%	4.4%	11.1%	23.1%	39.6%	55.9%	65.3%	68.5%	69.0%	69.2%
	<3.80	0.2%	0.0%	0.0%	0.2%	1.2%	4.1%	9.9%	20.5%	34.8%	48.6%	56.3%	59.0%	59.4%	59.5%
	<3.70	0.1%	0.0%	0.0%	0.2%	1.0%	3.5%	8.5%	17.7%	29.6%	41.0%	47.2%	49.2%	49.5%	49.6%
	<3.60	0.1%	0.0%	0.0%	0.1%	0.9%	2.9%	7.0%	14.6%	23.9%	32.8%	37.7%	39.2%	39.5%	39.6%
	<3.50	0.1%	0.0%	0.0%	0.1%	0.6%	2.2%	5.2%	10.5%	17.3%	23.7%	27.0%	28.0%	28.2%	28.3%
	<3.40	0.1%	0.0%	0.0%	0.1%	0.5%	1.6%	3.7%	7.7%	12.5%	17.1%	19.5%	20.1%	20.2%	20.3%
	<3.30	0.0%	0.0%	0.0%	0.0%	0.3%	1.0%	2.4%	4.9%	8.0%	11.0%	12.6%	13.0%	13.1%	13.1%
	<3.20	0.0%	0.0%	0.0%	0.0%	0.1%	0.5%	1.4%	2.7%	4.4%	6.1%	7.0%	7.2%	7.3%	7.3%
	<3.10	0.0%	0.0%	0.0%	0.0%	0.0%	0.2%	0.6%	1.3%	2.1%	2.8%	3.3%	3.5%	3.5%	3.5%
	<3.00	0.0%	0.0%	0.0%	0.0%	0.0%	0.0%	0.1%	0.1%	0.2%	0.4%	0.5%	0.5%	0.5%	0.5%
	<2.90	0.0%	0.0%	0.0%	0.0%	0.0%	0.0%	0.0%	0.0%	0.1%	0.1%	0.2%	0.2%	0.2%	0.2%
	<2.80	0.0%	0.0%	0.0%	0.0%	0.0%	0.0%	0.0%	0.0%	0.0%	0.1%	0.1%	0.1%	0.1%	0.1%
	<2.70	0.0%	0.0%	0.0%	0.0%	0.0%	0.0%	0.0%	0.0%	0.0%	0.0%	0.0%	0.0%	0.0%	0.0%
<2.60	0.0%	0.0%	0.0%	0.0%	0.0%	0.0%	0.0%	0.0%	0.0%	0.0%	0.0%	0.0%	0.0%	0.0%	
<2.50	0.0%	0.0%	0.0%	0.0%	0.0%	0.0%	0.0%	0.0%	0.0%	0.0%	0.0%	0.0%	0.0%	0.0%	
n/a	0.0%	0.0%	0.0%	0.0%	0.0%	0.0%	0.0%	0.1%	0.1%	0.2%	0.3%	0.3%	0.3%	0.3%	
Total	0.4%	0.0%	0.0%	0.3%	1.5%	5.3%	13.2%	28.1%	50.2%	74.4%	90.9%	98.0%	99.6%	100.0%	

24. UC Irvine Admits in 2006 by Cumulative SAT & GPA

		Average SAT Score (200 - 800)													
		n/a	<250	<300	<350	<400	<450	<500	<550	<600	<650	<700	<750	<801	Total
Cumulative GPA (5.0 Scale)	<4.50+	23	0	4	9	79	279	968	3,067	7,108	12,083	16,123	18,414	19,096	19,119
	<4.50	23	0	4	9	79	279	968	3,067	7,108	12,083	16,122	18,412	19,094	19,117
	<4.40	23	0	4	9	79	279	966	3,062	7,089	12,031	16,025	18,287	18,952	18,975
	<4.30	22	0	4	9	76	273	948	3,011	6,923	11,616	15,277	17,232	17,759	17,781
	<4.20	18	0	4	9	75	264	910	2,861	6,523	10,791	13,910	15,421	15,753	15,771
	<4.10	16	0	4	8	71	242	824	2,610	5,932	9,725	12,350	13,520	13,736	13,752
	<4.00	15	0	4	8	58	194	684	2,205	4,953	8,021	9,986	10,824	10,968	10,983
	<3.90	13	0	4	6	43	153	556	1,866	4,212	6,750	8,337	8,996	9,101	9,114
	<3.80	11	0	4	6	36	116	422	1,503	3,354	5,288	6,475	6,945	7,020	7,031
	<3.70	5	0	2	3	21	75	314	1,127	2,486	3,891	4,711	5,045	5,098	5,103
	<3.60	4	0	0	1	11	51	219	790	1,700	2,613	3,139	3,355	3,382	3,386
	<3.50	1	0	0	1	6	33	136	458	937	1,398	1,658	1,770	1,782	1,783
	<3.40	1	0	0	1	4	16	80	285	580	848	992	1,046	1,053	1,054
	<3.30	1	0	0	0	3	12	49	146	254	363	434	455	458	459
	<3.20	1	0	0	0	3	7	21	42	66	91	102	107	109	110
	<3.10	1	0	0	0	3	5	14	21	33	44	50	51	53	54
	<3.00	1	0	0	0	0	0	3	3	12	15	17	17	17	18
	<2.90	1	0	0	0	0	0	2	2	7	7	8	8	8	9
	<2.80	1	0	0	0	0	0	2	2	4	4	5	5	5	6
	<2.70	0	0	0	0	0	0	0	0	0	0	1	1	1	1
<2.60	0	0	0	0	0	0	0	0	0	0	0	0	0	0	
<2.50	0	0	0	0	0	0	0	0	0	0	0	0	0	0	
n/a	0	0	0	0	1	3	7	18	30	45	61	63	64	64	
Total	23	0	4	9	80	282	975	3,085	7,138	12,128	16,184	18,477	19,160	19,183	

25. UC Irvine Admits in 2006 by Cumulative SAT & GPA Percentile

		Average SAT Score (200 - 800)													
		n/a	<250	<300	<350	<400	<450	<500	<550	<600	<650	<700	<750	<801	Total
Cumulative GPA (5.0 Scale)	<4.50+	0.1%	0.0%	0.0%	0.0%	0.4%	1.5%	5.0%	16.0%	37.1%	63.0%	84.0%	96.0%	99.5%	99.7%
	<4.50	0.1%	0.0%	0.0%	0.0%	0.4%	1.5%	5.0%	16.0%	37.1%	63.0%	84.0%	96.0%	99.5%	99.7%
	<4.40	0.1%	0.0%	0.0%	0.0%	0.4%	1.5%	5.0%	16.0%	37.0%	62.7%	83.5%	95.3%	98.8%	98.9%
	<4.30	0.1%	0.0%	0.0%	0.0%	0.4%	1.4%	4.9%	15.7%	36.1%	60.6%	79.6%	89.8%	92.6%	92.7%
	<4.20	0.1%	0.0%	0.0%	0.0%	0.4%	1.4%	4.7%	14.9%	34.0%	56.3%	72.5%	80.4%	82.1%	82.2%
	<4.10	0.1%	0.0%	0.0%	0.0%	0.4%	1.3%	4.3%	13.6%	30.9%	50.7%	64.4%	70.5%	71.6%	71.7%
	<4.00	0.1%	0.0%	0.0%	0.0%	0.3%	1.0%	3.6%	11.5%	25.8%	41.8%	52.1%	56.4%	57.2%	57.3%
	<3.90	0.1%	0.0%	0.0%	0.0%	0.2%	0.8%	2.9%	9.7%	22.0%	35.2%	43.5%	46.9%	47.4%	47.5%
	<3.80	0.1%	0.0%	0.0%	0.0%	0.2%	0.6%	2.2%	7.8%	17.5%	27.6%	33.8%	36.2%	36.6%	36.7%
	<3.70	0.0%	0.0%	0.0%	0.0%	0.1%	0.4%	1.6%	5.9%	13.0%	20.3%	24.6%	26.3%	26.6%	26.6%
	<3.60	0.0%	0.0%	0.0%	0.0%	0.1%	0.3%	1.1%	4.1%	8.9%	13.6%	16.4%	17.5%	17.6%	17.7%
	<3.50	0.0%	0.0%	0.0%	0.0%	0.0%	0.2%	0.7%	2.4%	4.9%	7.3%	8.6%	9.2%	9.3%	9.3%
	<3.40	0.0%	0.0%	0.0%	0.0%	0.0%	0.1%	0.4%	1.5%	3.0%	4.4%	5.2%	5.5%	5.5%	5.5%
	<3.30	0.0%	0.0%	0.0%	0.0%	0.0%	0.1%	0.3%	0.8%	1.3%	1.9%	2.3%	2.4%	2.4%	2.4%
	<3.20	0.0%	0.0%	0.0%	0.0%	0.0%	0.0%	0.1%	0.2%	0.3%	0.5%	0.5%	0.6%	0.6%	0.6%
	<3.10	0.0%	0.0%	0.0%	0.0%	0.0%	0.0%	0.1%	0.1%	0.2%	0.2%	0.3%	0.3%	0.3%	0.3%
	<3.00	0.0%	0.0%	0.0%	0.0%	0.0%	0.0%	0.0%	0.0%	0.1%	0.1%	0.1%	0.1%	0.1%	0.1%
	<2.90	0.0%	0.0%	0.0%	0.0%	0.0%	0.0%	0.0%	0.0%	0.0%	0.0%	0.0%	0.0%	0.0%	0.0%
	<2.80	0.0%	0.0%	0.0%	0.0%	0.0%	0.0%	0.0%	0.0%	0.0%	0.0%	0.0%	0.0%	0.0%	0.0%
	<2.70	0.0%	0.0%	0.0%	0.0%	0.0%	0.0%	0.0%	0.0%	0.0%	0.0%	0.0%	0.0%	0.0%	0.0%
<2.60	0.0%	0.0%	0.0%	0.0%	0.0%	0.0%	0.0%	0.0%	0.0%	0.0%	0.0%	0.0%	0.0%	0.0%	
<2.50	0.0%	0.0%	0.0%	0.0%	0.0%	0.0%	0.0%	0.0%	0.0%	0.0%	0.0%	0.0%	0.0%	0.0%	
n/a	0.0%	0.0%	0.0%	0.0%	0.0%	0.0%	0.0%	0.1%	0.2%	0.2%	0.3%	0.3%	0.3%	0.3%	
Total	0.1%	0.0%	0.0%	0.0%	0.4%	1.5%	5.1%	16.1%	37.2%	63.2%	84.4%	96.3%	99.9%	100.0%	

26. UC Merced Admits in 2006 by Cumulative SAT & GPA

		Average SAT Score (200 - 800)													
		n/a	<250	<300	<350	<400	<450	<500	<550	<600	<650	<700	<750	<801	Total
Cumulative GPA (5.0 Scale)	<4.50+	13	0	6	28	254	986	2,535	4,719	7,036	8,791	9,623	9,956	10,009	10,022
	<4.50	13	0	6	28	254	986	2,535	4,719	7,036	8,791	9,623	9,956	10,009	10,022
	<4.40	13	0	6	28	254	985	2,533	4,716	7,032	8,783	9,612	9,944	9,997	10,010
	<4.30	13	0	6	28	254	980	2,526	4,703	7,002	8,726	9,528	9,845	9,889	9,902
	<4.20	13	0	6	28	253	974	2,507	4,656	6,927	8,603	9,348	9,635	9,672	9,685
	<4.10	13	0	6	28	250	961	2,474	4,584	6,789	8,387	9,088	9,343	9,376	9,389
	<4.00	13	0	6	26	239	916	2,362	4,367	6,431	7,933	8,572	8,800	8,829	8,842
	<3.90	12	0	5	21	230	877	2,259	4,154	6,100	7,485	8,078	8,287	8,312	8,324
	<3.80	11	0	5	20	217	810	2,066	3,801	5,567	6,803	7,334	7,516	7,536	7,547
	<3.70	10	0	4	18	190	720	1,832	3,384	4,931	6,018	6,478	6,631	6,646	6,656
	<3.60	5	0	3	16	167	618	1,570	2,899	4,234	5,176	5,567	5,701	5,713	5,718
	<3.50	4	0	2	13	134	495	1,234	2,294	3,360	4,123	4,442	4,548	4,557	4,561
	<3.40	3	0	1	8	95	374	973	1,832	2,678	3,295	3,547	3,632	3,640	3,643
	<3.30	1	0	0	6	58	254	709	1,349	1,993	2,455	2,640	2,707	2,714	2,715
	<3.20	0	0	0	3	29	140	424	862	1,316	1,653	1,779	1,828	1,835	1,835
	<3.10	0	0	0	1	13	60	223	485	795	1,024	1,109	1,147	1,152	1,152
	<3.00	0	0	0	0	1	13	59	141	281	388	433	457	461	461
	<2.90	0	0	0	0	0	3	22	48	96	129	149	164	167	167
	<2.80	0	0	0	0	0	0	3	8	18	26	30	36	38	38
	<2.70	0	0	0	0	0	0	1	5	8	13	14	18	19	19
<2.60	0	0	0	0	0	0	1	4	5	7	8	10	11	11	
<2.50	0	0	0	0	0	0	0	2	2	3	4	6	7	7	
n/a	0	0	0	0	3	6	15	27	37	40	46	46	47	47	
Total	13	0	6	28	257	992	2,550	4,746	7,073	8,831	9,669	10,002	10,056	10,069	

27. UC Merced Admits in 2006 by Cumulative SAT & GPA Percentile

		Average SAT Score (200 - 800)													
		n/a	<250	<300	<350	<400	<450	<500	<550	<600	<650	<700	<750	<801	Total
Cumulative GPA (5.0 Scale)	<4.50+	0.1%	0.0%	0.1%	0.3%	2.5%	9.8%	25.2%	46.9%	69.9%	87.3%	95.6%	98.9%	99.4%	99.5%
	<4.50	0.1%	0.0%	0.1%	0.3%	2.5%	9.8%	25.2%	46.9%	69.9%	87.3%	95.6%	98.9%	99.4%	99.5%
	<4.40	0.1%	0.0%	0.1%	0.3%	2.5%	9.8%	25.2%	46.8%	69.8%	87.2%	95.5%	98.8%	99.3%	99.4%
	<4.30	0.1%	0.0%	0.1%	0.3%	2.5%	9.7%	25.1%	46.7%	69.5%	86.7%	94.6%	97.8%	98.2%	98.3%
	<4.20	0.1%	0.0%	0.1%	0.3%	2.5%	9.7%	24.9%	46.2%	68.8%	85.4%	92.8%	95.7%	96.1%	96.2%
	<4.10	0.1%	0.0%	0.1%	0.3%	2.5%	9.5%	24.6%	45.5%	67.4%	83.3%	90.3%	92.8%	93.1%	93.2%
	<4.00	0.1%	0.0%	0.1%	0.3%	2.4%	9.1%	23.5%	43.4%	63.9%	78.8%	85.1%	87.4%	87.7%	87.8%
	<3.90	0.1%	0.0%	0.0%	0.2%	2.3%	8.7%	22.4%	41.3%	60.6%	74.3%	80.2%	82.3%	82.6%	82.7%
	<3.80	0.1%	0.0%	0.0%	0.2%	2.2%	8.0%	20.5%	37.7%	55.3%	67.6%	72.8%	74.6%	74.8%	75.0%
	<3.70	0.1%	0.0%	0.0%	0.2%	1.9%	7.2%	18.2%	33.6%	49.0%	59.8%	64.3%	65.9%	66.0%	66.1%
	<3.60	0.0%	0.0%	0.0%	0.2%	1.7%	6.1%	15.6%	28.8%	42.0%	51.4%	55.3%	56.6%	56.7%	56.8%
	<3.50	0.0%	0.0%	0.0%	0.1%	1.3%	4.9%	12.3%	22.8%	33.4%	40.9%	44.1%	45.2%	45.3%	45.3%
	<3.40	0.0%	0.0%	0.0%	0.1%	0.9%	3.7%	9.7%	18.2%	26.6%	32.7%	35.2%	36.1%	36.2%	36.2%
	<3.30	0.0%	0.0%	0.0%	0.1%	0.6%	2.5%	7.0%	13.4%	19.8%	24.4%	26.2%	26.9%	27.0%	27.0%
	<3.20	0.0%	0.0%	0.0%	0.0%	0.3%	1.4%	4.2%	8.6%	13.1%	16.4%	17.7%	18.2%	18.2%	18.2%
	<3.10	0.0%	0.0%	0.0%	0.0%	0.1%	0.6%	2.2%	4.8%	7.9%	10.2%	11.0%	11.4%	11.4%	11.4%
	<3.00	0.0%	0.0%	0.0%	0.0%	0.0%	0.1%	0.6%	1.4%	2.8%	3.9%	4.3%	4.5%	4.6%	4.6%
	<2.90	0.0%	0.0%	0.0%	0.0%	0.0%	0.0%	0.2%	0.5%	1.0%	1.3%	1.5%	1.6%	1.7%	1.7%
	<2.80	0.0%	0.0%	0.0%	0.0%	0.0%	0.0%	0.0%	0.1%	0.2%	0.3%	0.3%	0.4%	0.4%	0.4%
	<2.70	0.0%	0.0%	0.0%	0.0%	0.0%	0.0%	0.0%	0.0%	0.1%	0.1%	0.1%	0.2%	0.2%	0.2%
<2.60	0.0%	0.0%	0.0%	0.0%	0.0%	0.0%	0.0%	0.0%	0.0%	0.1%	0.1%	0.1%	0.1%	0.1%	
<2.50	0.0%	0.0%	0.0%	0.0%	0.0%	0.0%	0.0%	0.0%	0.0%	0.0%	0.0%	0.1%	0.1%	0.1%	
n/a	0.0%	0.0%	0.0%	0.0%	0.0%	0.1%	0.1%	0.3%	0.4%	0.4%	0.5%	0.5%	0.5%	0.5%	
Total	0.1%	0.0%	0.1%	0.3%	2.6%	9.9%	25.3%	47.1%	70.2%	87.7%	96.0%	99.3%	99.9%	100.0%	